

# AGENDA

Virtual Health Summit - Midwest & TOLA

# Virtual Health Summit

## SPEAKERS



**Thomas McGinn MD  
MPH**  
Executive Vice  
President, Physician  
Enterprise  
[CommonSpirit  
Health](#)



**Anthony Perry**  
Vice President  
Ambulatory  
Transformation  
[Rush University  
Medical Center](#)



**Iris Berman**  
Vice President of  
Telehealth Services  
[Northwell Health](#)



**Adam Darvish**  
Senior Vice President  
Health System  
Development  
[Kindred](#)



**Roberta Schwartz**  
Chief Innovation  
Officer  
[Houston Methodist  
Healthcare System](#)



**Cara Veale**  
CEO  
[Indiana Rural Health  
Association](#)



**Kevin Ban**  
Chief Medical Officer  
[Walgreens](#)



**VJ Viswanathan**  
CEO  
[Torque](#)



**Adrin Mammen**  
Associate Vice  
President Patient  
Access  
Transformation  
[Montefiore Health  
System](#)



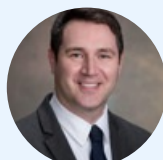
**Sarah Pletcher**  
Vice President and  
Executive Medical  
Director Virtual Care  
[Houston Methodist  
Healthcare System](#)



**Melissa Jordan**  
Director Quality &  
Telehealth, Post-  
Acute Division  
[Advocate Aurora  
Health System](#)



**Brian Skow MD**  
Chief Medical Officer  
[Avera Health](#)



**Chad Craig**  
RVP Medical Affairs  
& System Hospital  
Medicine Director  
[Marshfield Clinic  
Health System](#)



**Jody Haines MHA  
FACHE**  
Director Telehealth  
[Billings Clinic](#)



**Albert Ferreira**  
Director Telehealth  
Operations  
[Metro Health](#)



**Chuck D'Antonio**  
Manager, Solution  
Architecture  
[OutSystems](#)



**Judd Hollander**  
Senior Vice President  
of Healthcare  
Delivery Innovation  
[Thomas Jefferson  
University](#)

Healthcare leadership needs to exhibit adaptability and resilience, especially during times of disruption. Being forced to make extremely fast decisions with high levels of uncertainty requires the latest knowledge within the industry's latest technologies.

The C-Vision program team carefully researches the issues facing healthcare leadership with our panels of industry advisors and brings to you impactful programs that provide real world strategies and solutions that can have meaningful impact in the short and long term.

[Click Here to Register](#)



**July 15, 2021**

Central Standard Time (CST)

## KEYNOTE

**9:00 AM-9:30 AM**

### Impacts of Virtual Health on Patient Centric Care

Telemedicine is rapidly evolving. Issues with regulation and reimbursement have prevented its full immersion into the healthcare system. During the current pandemic, the Centers for Medicare and Medicaid Services expanded access to telemedicine services. The advantages of telemedicine suggest its cost-effectiveness, ability to extend access to specialty services, and its potential to help mitigate the looming physician shortage. Disadvantages seemingly include lack of available technological resources in certain parts of the country, issues with security of patient data, and challenges in performing the traditional patient examination. Let's explore.

#### PANELISTS



**Thomas McGinn MD  
MPH**  
Executive Vice  
President, Physician  
Enterprise  
CommonSpirit  
Health

## VISION KEYNOTE PANEL

**9:35 AM-10:30 AM**

### Shaping a Virtual Health Strategy

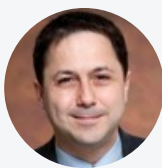
Virtual Health offers an opportunity for healthcare providers to improve the value for their patients, communities, and regions. As providers continue to innovate how care is provided they are seeing the measurable impact virtual health can make by leveraging technology to connect with patients in new ways. Let's consider key drivers, scope of services, and methods of delivery.

## CHAIR



**Iris Berman**  
Vice President of  
Telehealth Services  
Northwell Health

## PANELISTS



**Anthony Perry**  
Vice President  
Ambulatory  
Transformation  
Rush University  
Medical Center



**Adam Darvish**  
Senior Vice President  
Health System  
Development  
Kindred



**Roberta Schwartz**  
Chief Innovation  
Officer  
Houston Methodist  
Healthcare System



**Cara Veale**  
CEO  
Indiana Rural Health  
Association



**Brian Skow MD**  
Chief Medical Officer  
Avera Health

## FIRESIDE CHAT

10:35 AM-11:30 AM

### Patient Centric Care and the Future of Pharmacy

Healthcare is creating more opportunities for patients to receive remote treatment options whether from their home or from long-term care or senior living residence. An increasingly important component of treatment planning is prescription services. How do the internal or external services provided by the pharmacy mirror the patient-centric care models the healthcare provider has developed? A patient's experience with the pharmacy of the future will be a true omnichannel experience. In fact, their experience won't start with walking in the door, it may start on their couch when they use a mobile device to contact their pharmacy.

## PANELISTS



**Kevin Ban**  
Chief Medical Officer  
Walgreens



**VJ Viswanathan**  
CEO  
Torque

## VISION VOICES

11:35 AM-12:05 PM

### Improving Quality of Care and Creating Financial Efficiencies

With new technologies boosted by electronic medical records and patient data management systems, data science, and analytic tools, massive amounts of data can be screened in seconds. Thus providing insightful information. How can we more effectively use the information in virtual health to make decisions and manage resources including the optimization of workflow, reducing unnecessary variation, and more effectively, managing workflow?

## PANELISTS



**Chuck D'Antonio**  
Manager, Solution  
Architecture  
[OutSystems](#)

## KEYNOTE

12:10 PM-12:40 PM

### Virtual Health 2021 Debunking The Myths

Prior to the Covid-19 pandemic, policymakers and leaders from both the health care delivery side and also the payer side were busy “reimagining” health care; but change was slow to occur because the economic incentives were not aligned with the vision. Covid-19 changed everything. Suddenly it's time to maneuver past reimagining and begin recreating. Let's consider the perceived impediments that led to the slow adoption of telemedicine, the changes that came with the Covid-19 pandemic, and advice on how to most easily implement a telemedicine program rapidly.

## PANELISTS



**Judd Hollander**  
Senior Vice President  
of Healthcare  
Delivery Innovation  
[Thomas Jefferson  
University](#)

## VISION KEYNOTE PANEL

12:45 PM-1:40 PM

### What are the Keys to Effective Use of People, Processes & Technologies?

Innovation is the result of successful people, processes, and technology changes that enable a new level of productivity and performance. What are the disruptors that have impacted virtual health, and how healthcare organizations across the continuum achieve the right combination of people, processes, and technology?

## CHAIR

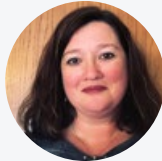


**Adrin Mammen**  
Associate Vice  
President Patient  
Access  
Transformation  
Montefiore Health  
System

## PANELISTS



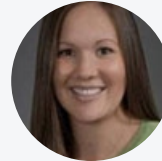
**Sarah Pletcher**  
Vice President and  
Executive Medical  
Director Virtual Care  
Houston Methodist  
Healthcare System



**Melissa Jordan**  
Director Quality &  
Telehealth, Post-  
Acute Division  
Advocate Aurora  
Health System



**Chad Craig**  
RVP Medical Affairs  
& System Hospital  
Medicine Director  
Marshfield Clinic  
Health System



**Jody Haines MHA**  
**FACHE**  
Director Telehealth  
Billings Clinic



**Albert Ferreira**  
Director Telehealth  
Operations  
Metro Health

TOGETHER WITH

