

# AGENDA

## Healthcare Finance Think Tank

### SPEAKERS



**Linda Kulhanek**  
CFO South Region  
[CommonSpirit Health](#)



**Renato Suntay**  
CFO / Healthcare  
Steering Committee  
[Meadville Medical Center](#)



**Kim McCarthy**  
System VP Financial  
Reporting &  
Controller  
[Trinity Health](#)



**James Hopwood**  
CFO  
[Behavioral Health Group \(BHG\)](#)



**Tim Swope**  
CISO  
[Catholic Health System](#)



**Sheldon Pink**  
VP Revenue Cycle  
[Luminis Health](#)



**Nadiia Tysovska**  
Assistant Director,  
Fiscal Affairs  
Revenue Integrity  
[NYC Health + Hospitals](#)



**Yadira Castro**  
Director, Operations  
[Montefiore Nyack](#)



**Jason Gottlieb**  
Director, Revenue  
Cycle Advisory  
Services  
[New York Presbyterian Hospital](#)



**Michael Chirico**  
CISO  
[Saint Peter's HealthCare System](#)



**Michael Czumak**  
CISO  
[Memorial Sloan Kettering Cancer Center](#)



**Oleg Rivkin**  
CEO  
[Select Specialty Hospital](#)



**Anthony Rajkumar**  
COO  
[Prime Healthcare St Clare's Dover](#)



**Christopher LaCoe**  
DBA,RN  
VP Virtual Health  
[Penn State Health](#)



**Geeta Nastasi**  
CNIO  
[Northwell Health](#)



**Maxine Legall**  
Chief Diversity,  
Equity & Inclusion  
(former)  
[The Jewish Board](#)



**Tiffany Sturdivant**  
Director, Regional  
Needs Assessment  
and Planning  
[United Hospital Fund New York](#)



**Tonya Richards**  
VP HR s &  
Organizational  
Development  
[Maimonides Medical Center](#)



**Mike Berger**  
Chief Data &  
Analytics Officer  
Mount Sinai Health  
Partners



**Tara Bogart**  
VP Revenue Strategy  
PMMC



**Cindy Buchman**  
VP Strategic Planning  
& Operating Services  
Good Shepherd  
Rehabilitation  
Network



**Sophia Saleem**  
Chief Medical  
Information Officer  
Northwell Health



**Mauvareen Beverley**  
President  
Mauvreen Beverley  
MD



**Karina Checo**  
Director, Revenue  
Cycle  
Bergen New Bridge  
Medical Center



**Michael Gross**  
Manager,  
Cybersecurity  
Intelligence  
Cleveland Clinic

[Click Here to Register](#)



**September 12, 2023**

Eastern Time

**Registration**

9:30 AM-10:00 AM

**Morning Networking**

10:00 AM-10:30 AM

**Opening Remarks**

10:30 AM-10:35 AM

**FIRESIDE CHAT**

**Challenges & Some Easy Wins**

10:35 AM-11:10 AM

Healthcare executives have had more sleepless than restful nights in recent times. Combined underpayments from Medicare and

Medicaid to hospitals continue to increase. Healthcare continues to see an increase in providing uncompensated care. Diagnostic errors are increasing, and likely causing more harm to patients than all other medical errors combined, with the most common among them missing early cancer and heart disease. During covid, double shifts, and staffing concerns destroyed staffing models and budgets....increasing numbers of physicians and care givers are reporting they are burned out, and looking at alternative career options. What's the light at the end of the tunnel, what are the strategies and technologies that are showing a favorable ROI?

#### CHAIR

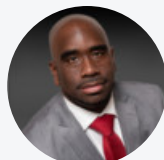


**Oleg Rivkin**  
CEO  
Select Specialty  
Hospital

#### PANELISTS



**Anthony Rajkumar**  
COO  
Prime Healthcare St  
Clare's Dover



**Sheldon Pink**  
VP Revenue Cycle  
Luminis Health

### FIRESIDE CHAT

11:25 AM-12:00 PM

## Revenue Cycle Tools & Strategies – Are We Missing Some Of The Basics

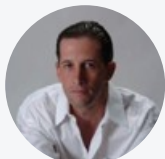
Best practices for revenue cycle improvement have focused on: careful implementation of workflow automation; collection and successful use of patient preference data; more timely collection of payments; and revision of the reporting and tracking systems. Let's look at some of the more successful examples of revenue cycle improvement.

#### CHAIR



**Sheldon Pink**  
VP Revenue Cycle  
Luminis Health

#### PANELISTS



**Jason Gottlieb**  
Director, Revenue  
Cycle Advisory  
Services  
New York  
Presbyterian  
Hospital



**Karina Checo**  
Director, Revenue  
Cycle  
Bergen New Bridge  
Medical Center

### Lunch & Disruptor Showcare

12:00 PM-1:00 PM

### PANEL

1:00 PM-1:45 PM

## Hospital At Home Are We Asking The Right Questions

Should hospitals reconsider how and where they deliver care to patients? Some are seeing the hospital-at-home model as a promising approach to improve value. What is the ROI on hospital-at-home is the ROI there for patients who need acute-level care to receive care in

their homes, rather than in a hospital. Does this care delivery model reduce costs, improve outcomes and enhance the patient experience?

#### CHAIR



**Christopher LaCoe**  
DBA,RN  
VP Virtual Health  
Penn State Health

#### PANELISTS



**Mike Berger**  
Chief Data &  
Analytics Officer  
Mount Sinai Health  
Partners



**Cindy Buchman**  
VP Strategic Planning  
& Operating Services  
Good Shepherd  
Rehabilitation  
Network



**Sophia Saleem**  
Chief Medical  
Information Officer  
Northwell Health

#### PANEL

1:50 PM-2:35 PM

## Delivering a Seamless Digital Healthcare Experience with Full Stack Observability

Digital transformation impacts every aspect of care delivery, from the administrative centers, to the hospital campuses and primary care clinics where patients are seen. As new capabilities are added, some services must migrate to a cloud-first or hybrid cloud model based on business requirements. Ensuring uptime, availability and fidelity of patient and provider experience becomes increasingly more difficult in such a dynamic environment. Learn how Full-Stack Observability to ease the burden and demystify your applications and technology stack, whether on-prem, in the cloud, or both

#### CHAIR



**Bob Clougherty**  
Ph.D.  
CIO  
CampusWorks

#### PANELISTS



**Jordan Tannenbaum**  
MD  
CIO/CMIO  
Saint Peter's  
HealthCare System



**Janos Hajagos**  
Chief of Data  
Analytics  
Stony Brook  
Medicine



**Daniel Lowe**  
Chief Medical  
Unit/Medical Director  
Start Treatment and  
Recovery Centers



**Trevor Fink**  
Senior Observability  
Engineer  
AppDynamics

## Networking Break

2:35 PM-3:05 PM

#### FIRESIDE CHAT

3:05 PM-3:40 PM

## Cyber Protection

Protecting the healthcare enterprise from cyber challenges is becoming increasingly difficult. One of the most valuable yet vulnerable resources the enterprise has is patient data. How can we leverage available security solutions for maximum results. What are the benchmarks we might compare to your own.

#### CHAIR



**Tim Swope**  
CISO  
Catholic Health  
System

#### PANELISTS



**Michael Chirico**  
CISO  
Saint Peter's  
HealthCare System



**Michael Czumak**  
CISO  
Memorial Sloan  
Kettering Cancer  
Center



**Michael Gross**  
Manager,  
Cybersecurity  
Intelligence  
Cleveland Clinic

### FIRESIDE CHAT

## Multi Generation & Multi Cultural Team Management

3:45 PM-4:20 PM

Healthcare leaders have to successfully manage multiple generations and a multi-cultural team. The must thin differently. Challenge each other to see past generational stereotypes and recognize everyone's seat at the table. Plan differently, Find opportunities to personalize the employee experience in staffing plans and professional development strategies.

#### CHAIR



**Maxine Legall**  
Chief Diversity,  
Equity & Inclusion  
(former)  
The Jewish Board

#### PANELISTS



**Tonya Richards**  
VP HR s &  
Organizational  
Development  
Maimonides Medical  
Center



**Tiffany Sturdivant**  
Director, Regional  
Needs Assessment  
and Planning  
United Hospital Fund  
New York



**Mauvareen Beverley**  
President  
Mauvreen Beverley  
MD

## Closing Remarks & Raffle Giveaway

4:20 PM-4:30 PM

## Cocktail Hour

4:30 PM-5:30 PM

### PARTNERS

*We are currently accepting partnership opportunities for this event.*