

AGENDA

The Future of Healthcare Think Tank

SPEAKERS



Iris Berman
VP Virtual Care
Northwell Health



Rachael Spooner
VP Strategy & Development
Northwell Health



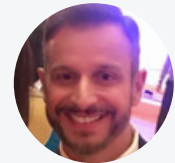
Janos Hajagos
Chief of Data Analytics
Stony Brook Medicine



Paul Haser MD
Chief Division of Vascular Surgery
One Brooklyn Health



Avijit Chatterjee Ph.D
Head of AI/ML
MSKCC



John Langone
VP Corporate Biomedical Services
Northwell Health



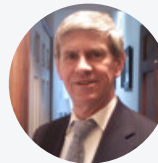
Cindy Buchman
VP Strategic Planning & Operating Services
Good Shepherd Rehabilitation Network



Jodi Leffingwell
Head of People
+MEDRITE



Benjamin Goldstein
Principal
North Star Outcomes



Ivan Durbak
CIO
BronxCare Health System



Timothy Swope
CISO
Lighthouse Cyber Risk Management



Judith Heller
VP Physician Recruitment
Northwell Health



Tom Cushing RN
Principal Advisor IT Strategy & Application Solutions
Northwell Health



Emiliya Bagdasarian
Senior Director of Special Projects
MedRite Urgent Care



Steve Craig
Senior Technical Architect IT
New York Presbyterian Hospital



Jason Gottlieb
Director, Revenue Cycle Advisory Services
New York Presbyterian Hospital



Jose Azar MD
Executive Vice President
Hackensack Meridian Health



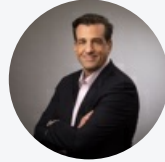
Alyeah Ramjit
VP System Transformation
One Brooklyn Health



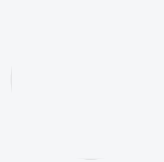
Sunil Kakade
System VP
enterprise Data,
Analytics & AI
CommonSpirit Health



Jonathan Thornbury
Chief Architect
Informatica



Mark Cooper
President &
Founder
PKI Solutions



Jon Batash MD
Chief Medical
Officer Post Acute
Cherish Health



Purna Prasad Ph.D.
CEO
Vedi Robotics at
Sterling Universal Grp

[Click Here to Register](#)



June 17, 2025

Eastern Time

Welcome & Registration

8:30 AM-9:00 AM

Morning Networking

9:00 AM-9:30 AM

Opening Remarks

9:30 AM-9:40 AM

VISION VOICES KEYNOTE
How AI is Re-Inventing Healthcare

9:40 AM-10:05 AM

Artificial Intelligence (AI) is revolutionizing healthcare, transforming everything from diagnostics to patient care and operational efficiency. Let's discuss three key components shaping this transformation:

- State of AI in Healthcare
- What AI Means to the Enterprise
- Keys to AI Governance and Strategy

PANELISTS



Sunil Kakade
System VP
enterprise Data,
Analytics & AI
CommonSpirit Health

KEYNOTE

10:10 AM-10:35 AM

The Cybersecurity Mirage: Glitzy Threats Grab Headlines; Silent Ones Stop Ventilators

Artificial-intelligence exploits, quantum-proof crypto, double-extortion ransomware—these are the shiny objects crowding every board deck and budget cycle. Yet in most U.S. hospitals the far greater risk hides in plain sight: a brittle web of root certificates, HSMs, and identity stores silently holding every EHR login, infusion pump, and robot-pharmacy transaction together. One expired certificate can stall 10,000 lab results and delay critical care—all while leadership is busy funding pilot projects for threats that may never materialize. In this fast-paced, 25-minute keynote, Mark B. Cooper, President & Founder, reframes cybersecurity through a clinical lens. Blending real incident timelines, fresh 2024–25 breach data, and insights from NIST 1800-series healthcare pilots, he challenges CISOs to see beyond the buzzwords and ask: “Is our digital-trust foundation strong enough to support the innovation we crave?” Attendees will leave with a three-step “Digital Trust First” framework for continuous PKI visibility, resilience testing, and board-level metrics—plus a 30-day self-assessment checklist to kick-start action.

PANELISTS



Mark Cooper

President &
Founder
PKI Solutions

PANEL

10:40 AM-11:25 AM

Harnessing Data to Drive Innovation & Efficiency In Healthcare

Harnessing data securely in healthcare is essential for driving innovation and efficiency while ensuring patient privacy. By implementing robust data protection measures like encryption, access controls, and regular audits, healthcare organizations can safeguard sensitive information. Analyzing data with advanced technologies such as AI and machine learning enables precise diagnostics, personalized treatment plans, and predictive analytics. Secure data sharing across healthcare providers enhances collaboration and improves patient outcomes. Adhering to regulatory standards ensures compliance and builds patient trust. This secure approach to data management fosters innovation, enhances operational efficiency, and delivers high-quality, patient-centric care.

CHAIR



Emiliya Bagdasarian

Senior Director of
Special Projects
MedRite Urgent Care

PANELISTS



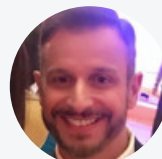
Janos Hajagos

Chief of Data
Analytics
Stony Brook Medicine



Jonathan Thornbury

Chief Architect
Informatica



John Langone

VP Corporate
Biomedical
Services
Northwell Health



**Avijit Chatterjee
Ph.D.**

Head of AI/ML
MSKCC

PANEL

Effective Strategies For Reducing Attrition in Healthcare: Building a Resilient Workforce

Attrition in healthcare is a growing concern, affecting patient care, operational stability, and workforce morale. High turnover rates among healthcare professionals stem from factors such as burnout, inadequate compensation, limited career growth, and workplace stress. Addressing these challenges requires a multi-faceted approach to enhance job satisfaction, retention, and overall workforce stability. Reducing attrition requires a proactive approach that prioritizes employee well-being, competitive compensation, career growth, a positive workplace culture, and improved staffing solutions. Healthcare organizations that invest in retention strategies not only strengthen their workforce but also enhance patient care quality and operational efficiency.

CHAIR



Benjamin Goldsteen

Principal
North Star Outcomes

PANELISTS



Jodi Leffingwell

Head of People
+MEDRITE



Judith Heller

VP Physician
Recruitment
Northwell Health

PANEL

12:35 PM-1:10 PM

Identity & Access Management

Identity management in healthcare is essential for protecting patient data and ensuring secure access to sensitive information. Implementing strong authentication methods, such as multi-factor authentication and biometrics, helps verify the identities of healthcare professionals and patients. Role-based access controls (RBAC) ensure that only authorized personnel can access specific data, minimizing the risk of unauthorized access. Regular audits and monitoring of access logs help detect and respond to potential security breaches. Educating staff about the importance of identity management and secure practices further enhances security. Effective identity management in healthcare supports regulatory compliance, protects patient privacy, and maintains trust in the system.

CHAIR



Timothy Swope

CISO
Lighthouse Cyber
Risk Management

PANELISTS



Ivan Durbak

CIO
BronxCare Health
System



Steve Craig

Senior Technical
Architect IT
New York
Presbyterian Hospital



**Tom Cushing
RN**

Principal Advisor IT
Strategy &
Application
Solutions
Northwell Health

Lunch & Networking

1:15 PM-2:15 PM

FIRESIDE CHAT

2:15 PM-3:00 PM

Improving Healthcare Outcomes Diagnosis, Data & Patient Centric Care

Accuracy of diagnosis, data quality and patient centric care are the buzzwords around improving healthcare outcomes. Leveraging artificial intelligence with medical procedures to diagnose disease early, when there is the highest potential for impact. Data quality lives by accuracy, consistency, and relevancy. How can we improve data quality by reducing redundancy and decreasing medical errors? Patient centric care thrives if the partnership among practitioners, patients, and their families align with patients' wants, needs, and preferences. In this session, we will discuss what's working and what's not working, as we look to improve diagnosis, data quality and patient centric care.

CHAIR



Rachael Spooner

VP Strategy & Development
Northwell Health

PANELISTS



Paul Haser MD

Chief Division of Vascular Surgery
One Brooklyn Health



Iris Berman

VP Virtual Care
Northwell Health



Alyeah Ramjit

VP System Transformation
One Brooklyn Health

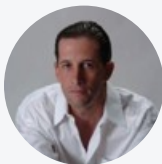
VISION VOICES

3:05 PM-3:20 PM

AI & Enterprise Revenue

Artificial Intelligence (AI) can the revenue cycle in healthcare by improving accuracy, speed, and compliance 1 . AI-driven automation helps streamline operations, capture missed revenue, and reduce administrative burdens 2 . However, trust, accuracy and workforce impacts are challenges that must also be considered

PANELISTS



Jason Gottlieb

Director, Revenue Cycle Advisory Services
New York Presbyterian Hospital

Networking Break

3:20 PM-3:40 PM

PANEL

3:40 PM-4:25 PM

Pioneering Innovation with AI and Analytics for Transformative Delivery

Pioneering clinic innovations are revolutionizing healthcare delivery by integrating advanced technologies and innovative practices. Telemedicine enables remote consultations, improving access to care and reducing patient wait times. AI-driven diagnostics and predictive analytics enhance accuracy and personalized treatment plans. Wearable health devices and IoT technology facilitate real-time monitoring and proactive health management. Implementing electronic health records (EHRs) and blockchain ensures secure, seamless data sharing across healthcare providers. Personalized medicine, powered by genetic research, tailors treatments to individual patient needs. These transformative innovations enhance patient outcomes, streamline operations, and create a more efficient, patient-centric healthcare system.

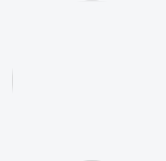
PANELISTS



Jose Azar MD
Executive Vice
President
Hackensack Meridian
Health



Cindy Buchman
VP Strategic
Planning &
Operating Services
Good Shepherd
Rehabilitation
Network



Jon Batash MD
Chief Medical
Officer Post Acute
Cherish Health

Closing Remarks & Raffle Giveaway

4:25 PM-4:30 PM

Cocktail Hour

4:30 PM-5:30 PM

TOGETHER WITH



Informatica
from Salesforce

PKI
SOLUTIONS