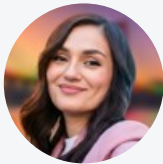


AGENDA

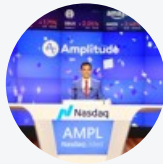
From Roadmaps to Production: How AI Is Reshaping the Product and Engineering Playbook

Executive Dinner

SPEAKERS



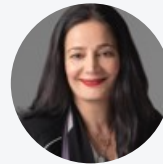
Marina Morgan
Founder, Principal Strategist
AQ



Nirmal Utwani
Director of Engineering
Amplitude



Swati Deo
Sr. Director of Product Management
Salesforce



Zehava Vardy
Sr. Director of Cloud Infrastructure & Platforms Engineering
Autodesk



Ayush Agarwal
Director, Product Management
Intuit

[Click Here to Register](#)

FROM ROADMAPS TO PRODUCTION: HOW AI IS RESHAPING THE PRODUCT AND ENGINEERING PLAYBOOK



June 03, 2026

5:30 PM-9:00 PM

Pacific Time

Product and engineering leaders are at an inflection point. AI is no longer just improving analytics or user insights. It is starting to influence product decisions, automate experiences, and reshape how software is built, shipped, and scaled. Yet many teams are discovering that without the right data foundation and experimentation culture, AI initiatives fail to deliver meaningful product or business impact.

This invite-only roundtable brings together senior product and engineering leaders from leading ISVs for an off-the-record discussion on how AI is being applied across the modern product and engineering stack. The conversation will focus on what is working in practice, what is not, and how leading teams are moving beyond static roadmaps toward AI-driven experimentation, personalization, and automated decisioning that accelerate time to value.

We will discuss what it truly means to be AI-ready as a product and engineering organization, why data quality, real-time visibility, and system reliability have become strategic priorities, and where AI-powered features and agents are delivering measurable outcomes versus where expectations still exceed reality. The group will also explore how teams are balancing speed, personalization, and autonomy with governance, scalability, and user trust.

Join a small group of peers for a candid exchange of real-world lessons and forward-looking perspectives, paired with an intimate dining experience designed to encourage open conversation and meaningful connection.

TOGETHER WITH

