

# Automate Permissions and Lifecycle for Human and Non-Human Identities

**CHALLENGE**

74% of breaches are identity related.  
95% of identities have excessive privilege. Together, this represents a huge risk to businesses.

**SOLUTION**

Andromeda automates identity permissions and lifecycle management using context, risk, and behavioral analysis helping your business withstand identity breaches.

**BENEFITS**

- **Frictionless**

Connect your environment in minutes, gain real-time insights, and increase productivity

- **Intelligent**

Achieve continuous, unparalleled protection through automation and artificial intelligence

- **Comprehensive**

Manage and secure human and non-human identities across clouds and applications

## The Identity Security Challenge

In today's digital landscape, the risk of security attacks has never been higher, with an alarming 74% of attacks resulting from compromised identities. These breaches target both human identities (users) and non-human identities (such as service accounts, API keys, and OAuth tokens). Human identities are susceptible to social engineering, while non-human identities are often compromised through credential leaks. For example, MGM Resorts suffered a significant breach when a help-desk employee was targeted via social engineering, resulting in over \$100M in damages. Similarly, at Microsoft, attackers exploited an unused service identity in a test account to monitor top executives' emails for two months undetected.

At the core, identities are lucrative targets due to the "excessive privilege" problem, where identities are granted too many permissions. When such an identity is compromised, the potential damage is exponentially magnified. While some security teams have attempted a "least privilege" approach, they often fail due to the sheer number of human and non-human identities and scale of permissions, especially in cloud environments.

This challenge is compounded by the absence of a physical security perimeter in cloud services, where identity itself

becomes the perimeter. Although cloud services enhance accessibility to systems and data, they also increase vulnerability. To defend against these attacks, companies must prioritize identity security and entitlements management.

## The Andromeda Security Solution

At Andromeda Security, our vision is to eliminate the negative impact of an identity breach by continuously maintaining every identity in the least privileged state. We achieve this by taking a unified approach that automates permissions and lifecycles of both human and non-human identities. Leveraging AI, we enable security teams to handle the scale of identities and permissions in cloud and SaaS applications.



# The Andromeda Platform protects companies with these capabilities:

## POSTURE RISK: The probability of an identity compromise

- ✓ MFA Strength
- ✓ Stale Identities
- ✓ Access Key Hygiene
- ✓ Missing Human Owner

## BEHAVIORAL RISK: The likelihood of having a compromised identity

- ✓ Activity Anomalies
- ✓ Login Anomalies
- ✓ Sharing Across Apps
- ✓ External Access Risk

## PRIVILEGE RISK: The business impact of an identity compromise

- ✓ Blast Risk
- ✓ Owned Non-Human Identity Risk
- ✓ Excessive Privilege
- ✓ Lateral Movement with Privilege Escalation

## OPERATIONAL INSIGHTS: Compliance and Hygiene issues

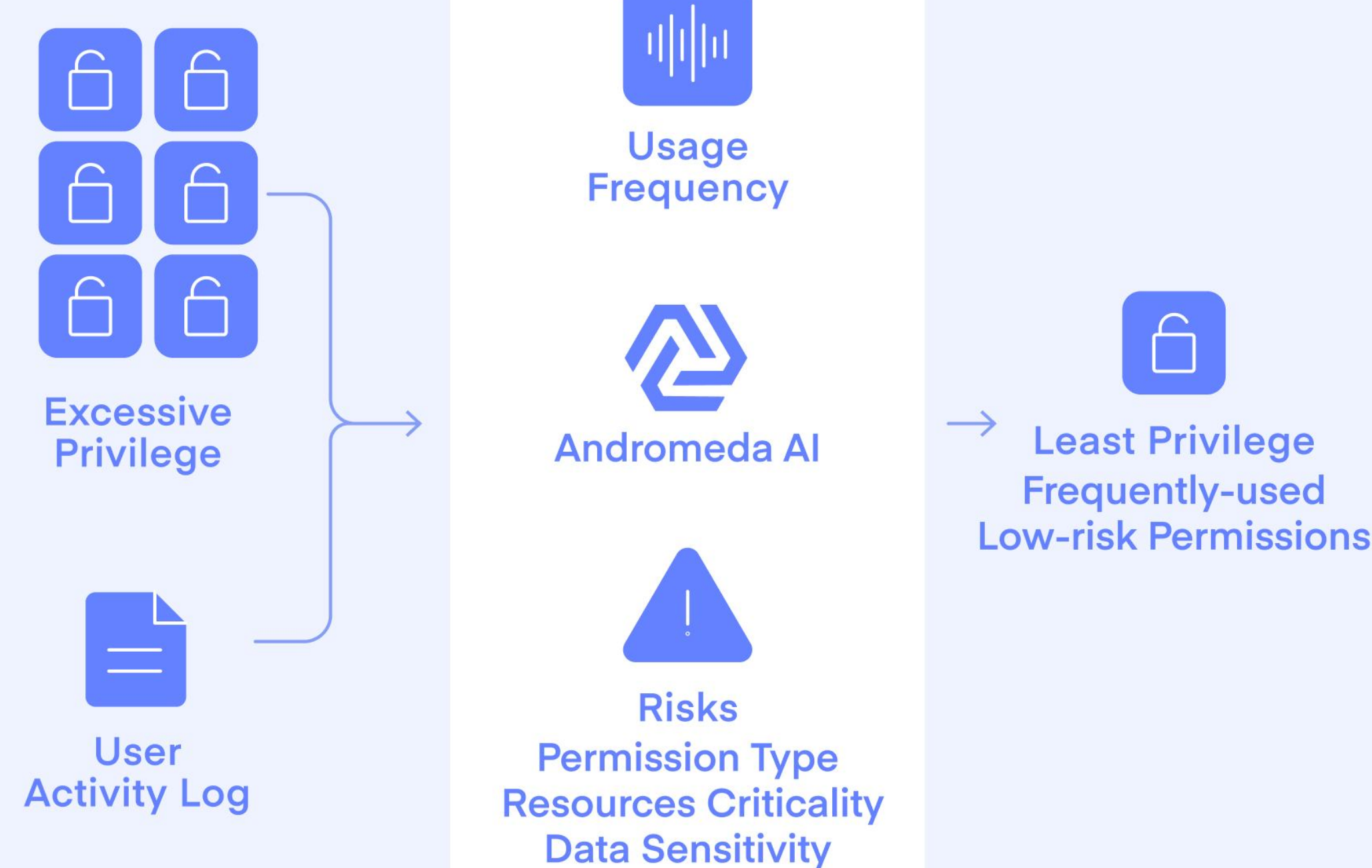
- ✓ Admins & Super-Admins
- ✓ Inconsistencies across Identity Sources
- ✓ Inactive Identities
- ✓ 3rd-Party Identities

## RISK AND OPERATIONAL INSIGHTS IN REAL TIME

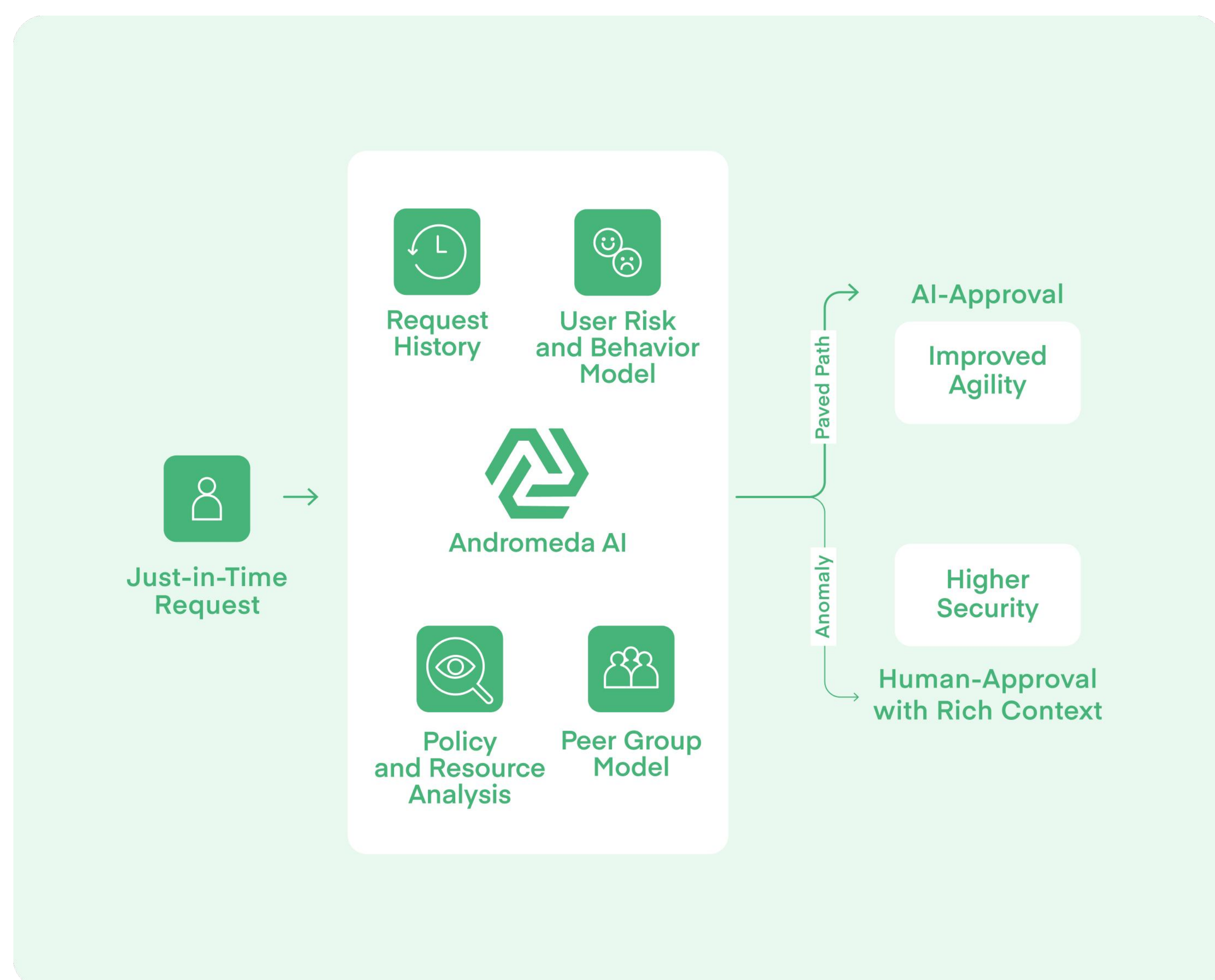
Andromeda helps you identify issues in real time and address them before they can do damage. You can identify anomalous trends across posture, behavioral, and privilege risks that are derived from identity attributes and real-time activities. You detect high-risk human and non-human identities across all clouds and apps in a single dashboard and prioritize response. The platform surfaces inconsistencies and deviations from best practices to keep your business on top of identity hygiene and compliance issues.

## AUTOMATED LEAST PRIVILEGE

It's nearly impossible to achieve least privilege with a manual approach in today's modern architecture. Andromeda automates least privilege based on usage and risk. Andromeda provides complete visibility into who has access to what, including high-risk permissions and usage frequency by analyzing activity logs and building usage frequency models. Andromeda maintains least standing privilege based on dynamic usage and risk: only frequently-used low-risk permissions are maintained in an identity's standing privilege; all other permissions are moved to just-in-time access.



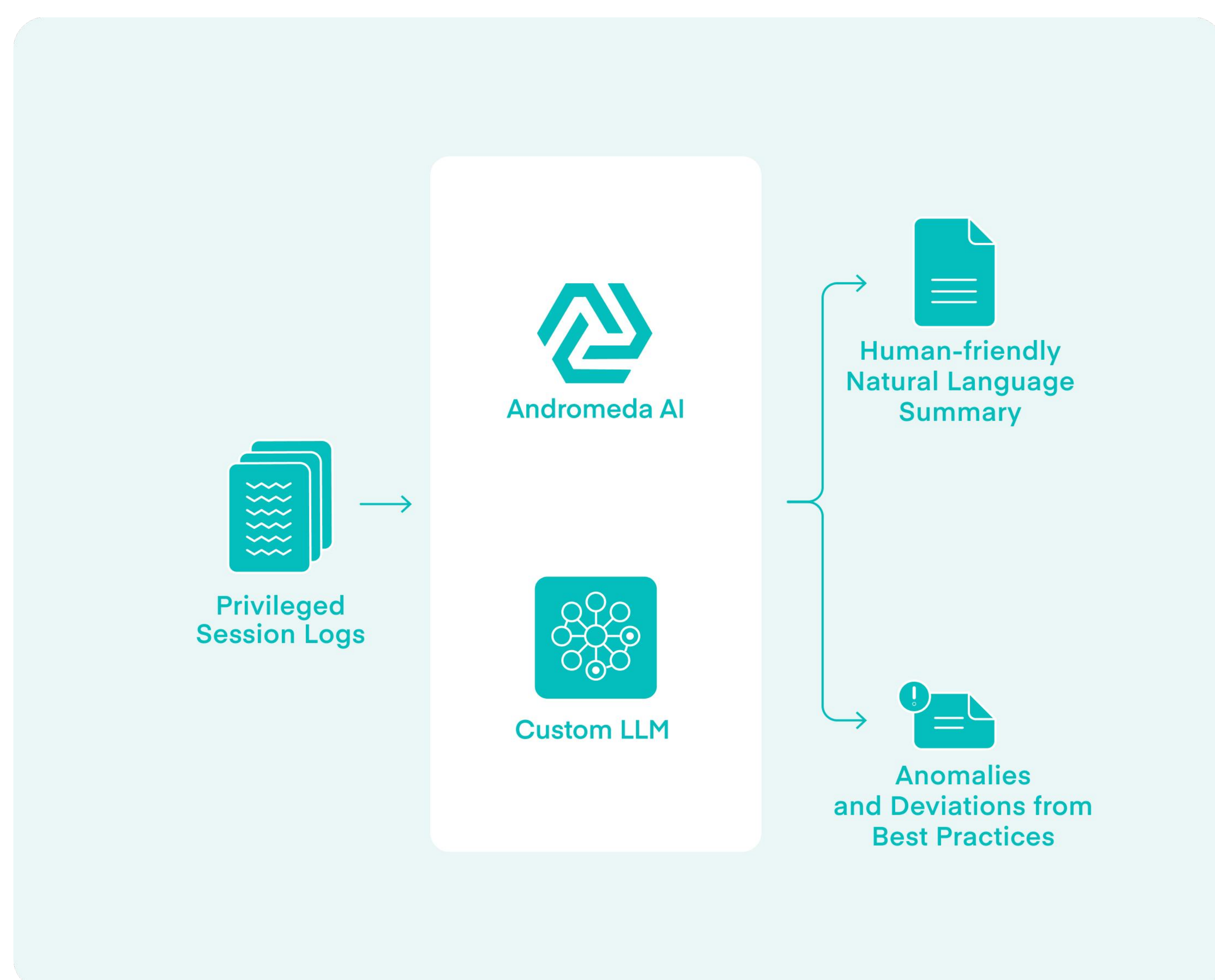




## AI-APPROVED JUST-IN-TIME ACCESS

Human approval for access has the potential for errors especially with the large number of requests due to the explosive growth in apps and cloud services. The Andromeda Platform helps you automate Just-in-Time privileged access with AI-powered approvals based on risk, context, and behavioral analysis.

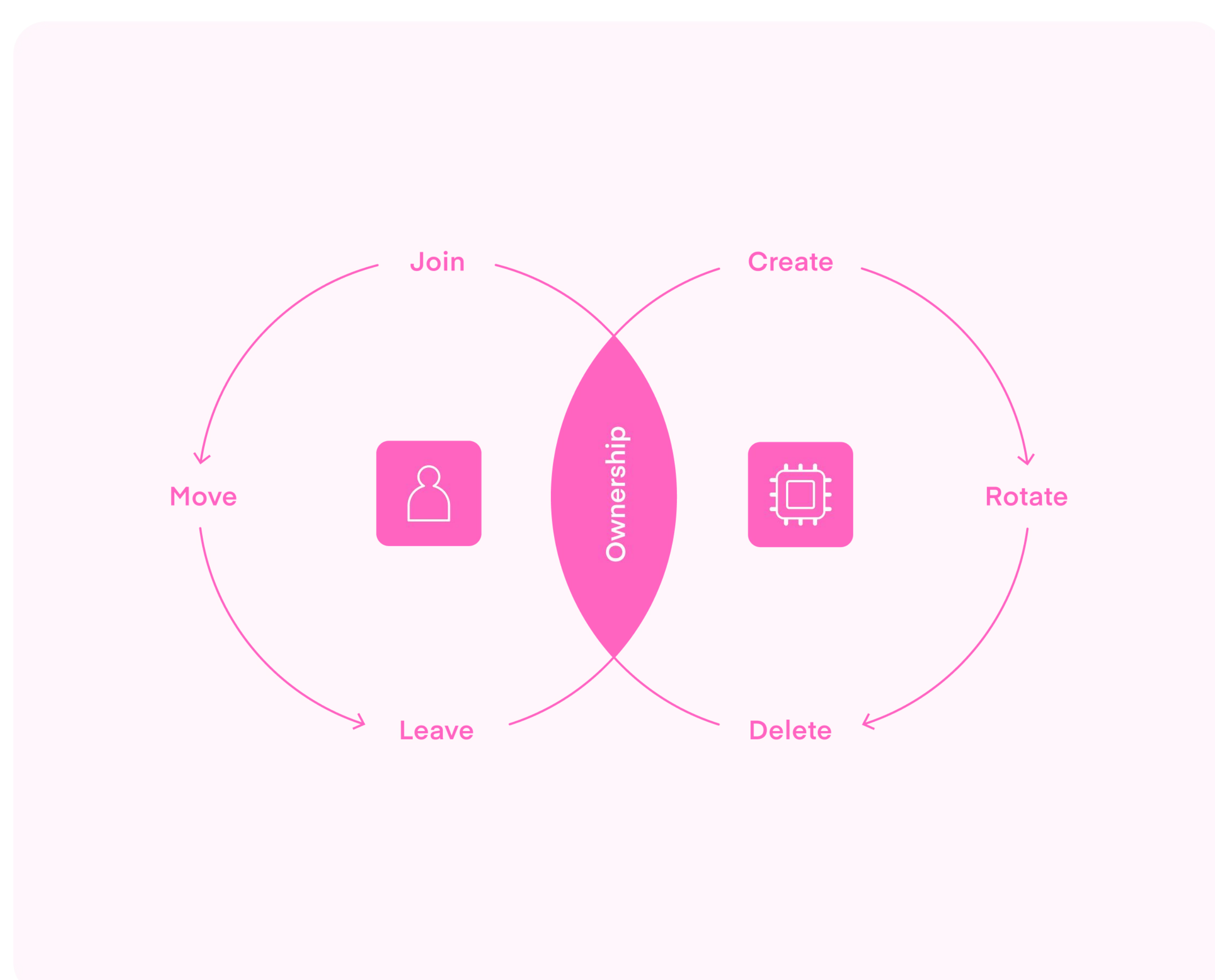
Users get instantaneous access in a frictionless manner, improving their productivity. Approvers are relieved from the administrative burden for common and mundane requests. Security teams get rich context for anomalous requests, improving the security posture. IT operations are simplified through automated provisioning/de-provisioning.



## GEN AI-POWERED SESSION SUMMARIES

Parsing machine-generated logs to understand privileged-session activity is humanly painful and ineffective. Fortunately, Andromeda simplifies this process by offering an easy-to-understand summary of privileged session activities by automatically parsing the activity logs and using a custom large-language model (LLM).

This enables real-time detection of anomalous activities and deviations from best practices. You can shift-left security by enabling users to take swift, self-service action.



## IDENTITY GOVERNANCE AND COMPLIANCE

The Andromeda Platform helps you maintain corporate governance and adhere to security regulatory compliance with the following capabilities:

1. Insights: Discovery and insights of all human and non-human identities in a single dashboard
2. Lifecycle Management: Automated lifecycle of human & non-human identities. Human ownership tracking of non-human identities
3. User Access Reviews: Effective user access reviews (UARs) and simplified compliance with automation and rich context



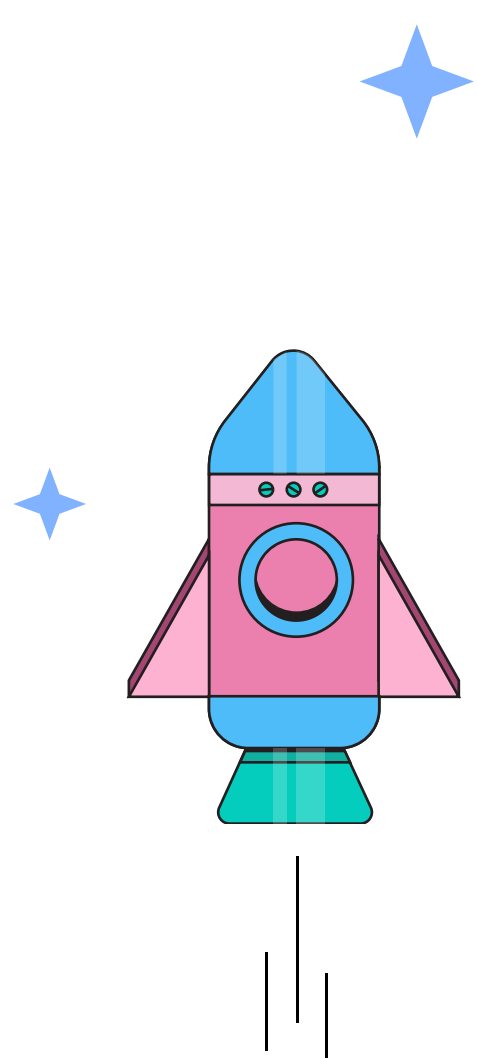
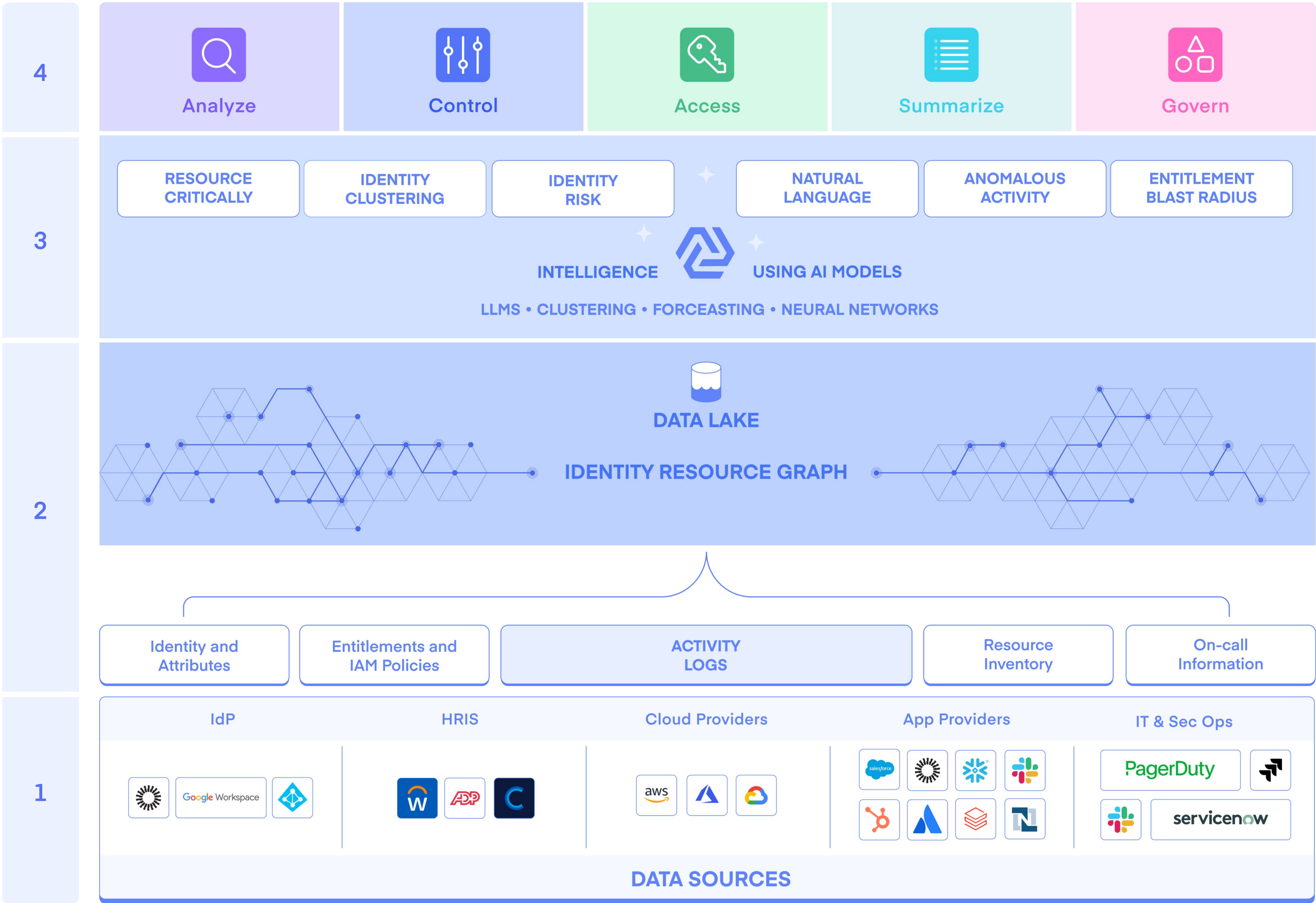
HOW THE ANDROMEDA PLATFORM WORKS

1. Andromeda collects configuration and activity data from a rich set of sources including identity providers, cloud and application providers, and HR information systems.

2. The platform transforms this data into an identity-resource graph to form a comprehensive data lake for all identities and its attributes.

3. Advanced AI/ML models operate on this graph to continuously generate security and operational insights.

4. Using these insights Andromeda automates identity and access management tasks, which greatly reduces the attack surface and increases agility in the organization.



GET READY TO BLAST OFF



